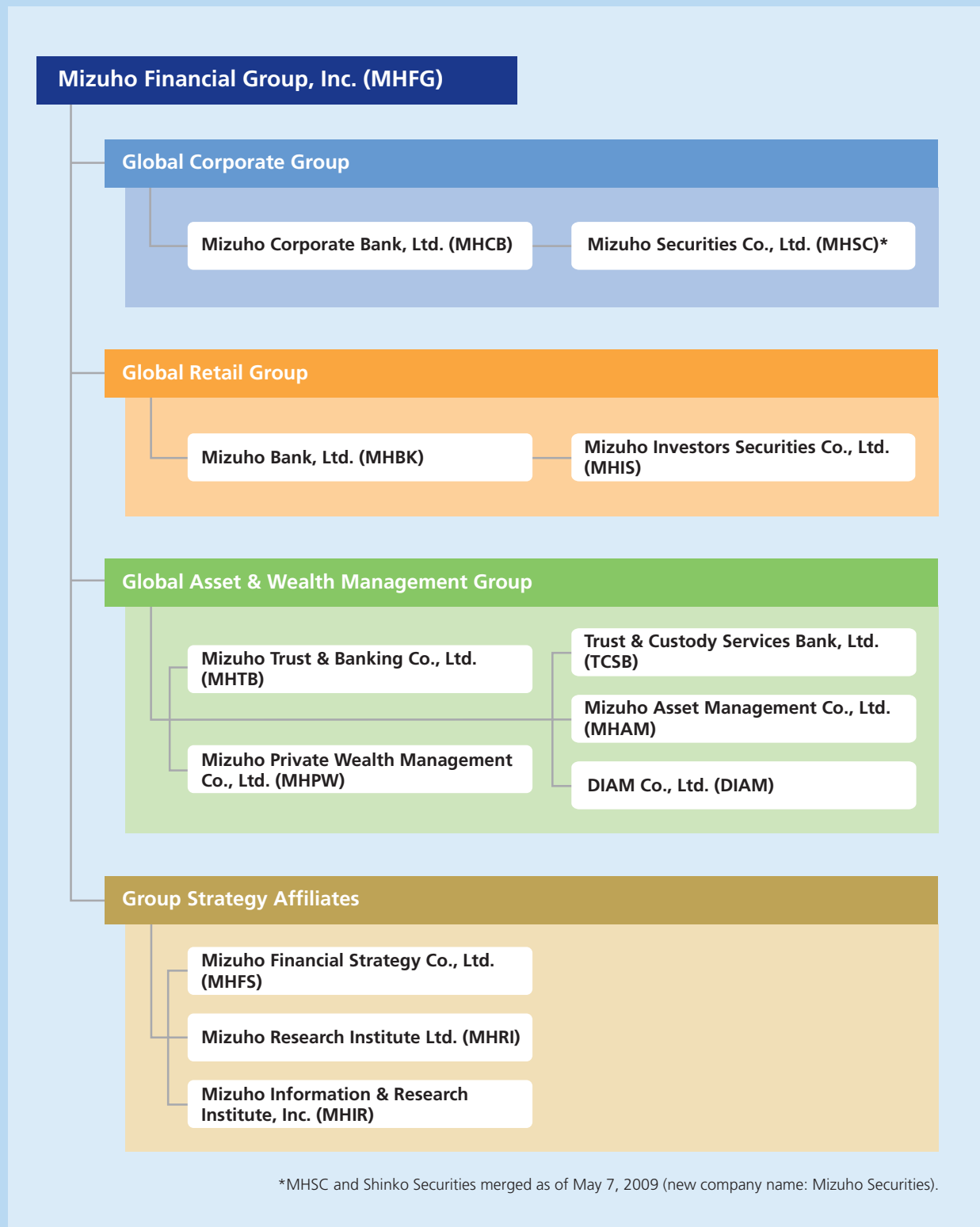


Management Structure

The three global groups organized based on customer needs are working to leverage their respective strengths as they work together to provide the highest-quality financial services.



We precisely and swiftly provide products, services and business solutions to meet the diversified financial needs of our customers by actively pursuing group synergies.

<p>Banking Business</p>	<p>Mizuho Corporate Bank (MHCB) MHCB focuses its business on corporate finance, primarily serving large corporations (such as those listed on the first sections of domestic stock exchanges), financial institutions and their group companies, public sector entities, and overseas corporations including subsidiaries of Japanese companies.</p>	<p>Mizuho Bank (MHBK) MHBK serves primarily individuals, SMEs, and middle-market corporations, and local governments in Japan.</p>	<p>Mizuho Trust & Banking (MHTB) A trust bank that possesses strengths in both the corporate and individual markets.</p>
<p>Securities Business</p>	<p>Mizuho Securities (MHSC)* A securities company with a global wholesale business platform and a nationwide customer base.</p>	<p>Mizuho Investors Securities (MHIS) A securities company that is building a powerful cooperative network with MHBK.</p>	
<p>Trust and Asset Management Business</p>	<p>Mizuho Trust & Banking (MHTB) A trust bank that makes the most of its trust functions in offering solutions to Mizuho's customers.</p>	<p>Trust & Custody Services Bank (TCSB) A highly specialized trust bank focusing on the custody business.</p>	<p>Defined Contribution Plan Services (DCPS) An entity that specializes in managing defined contribution pension plans.</p>
	<p>Mizuho Asset Management (MHAM) An asset management company with a long history (established in 1964).</p>	<p>DIAM An asset management company in which The Dai-ichi Mutual Life Insurance and Mizuho both have equity holdings.</p>	
<p>Other Businesses</p>	<p>UC Card A leader among credit card companies in Japan.</p>	<p>Mizuho Private Wealth Management (MHPW) A wealth management services company.</p>	<p>Mizuho Trust Realty Company A real estate agency.</p>
	<p>Mizuho Credit Guarantee A credit guarantee and real estate research company.</p>	<p>Mizuho Capital A principal venture capital company.</p>	<p>Mizuho Factors A factoring company.</p>
<p>Mizuho Research Institute (MHRI) A think tank.</p>	<p>Mizuho Information & Research Institute (MHIR) A company in charge of IT strategy.</p>	<p>Mizuho-DL Financial Technology A research and development company of financial technology.</p>	<p>Mizuho Financial Strategy (MHFS) An advisory company for financial institutions.</p>

Office Network

We utilize our office network, which covers every prefecture in Japan as well as major overseas cities, to respond to our customers' diversified and globalizing financial needs while supporting the smooth progress of economic activities.

International Network (As of July 31, 2009)

MHCB

- Overseas branch or relevant office
- Overseas representative office
- Major overseas subsidiary or relevant office

MHSC

- ▲ Overseas subsidiary
- ▲ Overseas representative office

MHTB

- Overseas subsidiary
- Overseas representative office

DIAM

- ◆ Overseas subsidiary



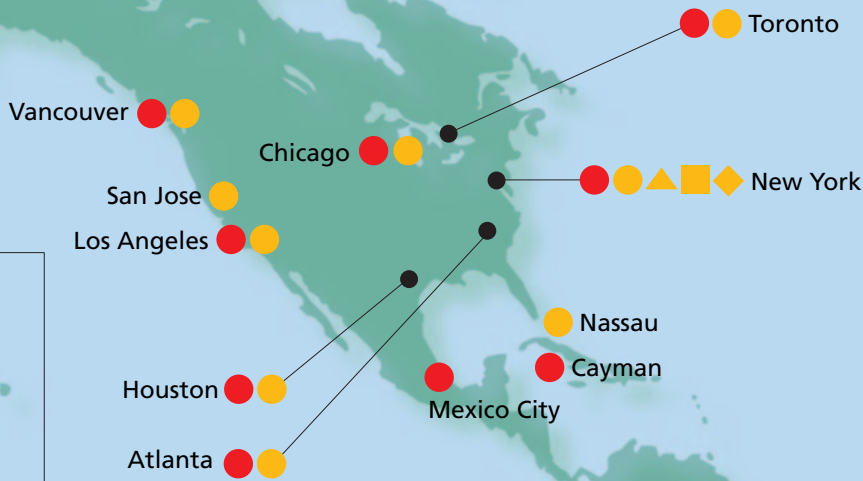
MHCB's Newly Established Offices (April 2008 — July 2009)

2008

- April Taichung Branch opened
- Mizuho Corporate Bank (China) Qingdao Branch opened
- September Mizuho Corporate Bank (China) Guangzhou Branch opened
- Mizuho Corporate Bank Nederland
- Madrid Representative Office opened
- October Kowloon Sub-Branch opened

2009

- March Mizuho Corporate Bank (China) Wuhan Branch opened



Network in Japan (As of July 31, 2009)

MHCB

Head Office and Branches: 18

MHBK

Head Office and Branches: 410

Sub-branches: 37

Agencies: 47

MHSC

Head Office and Departments: 3

Branches: 98

MHTB

Head Office and Branches: 35

Sub-branches: 2

MHIS

Head Office and Branches: 56

Planet Booths*: 148

*Planet Booths are the consulting booths of MHIS located in MHBK's Branches

São Paulo