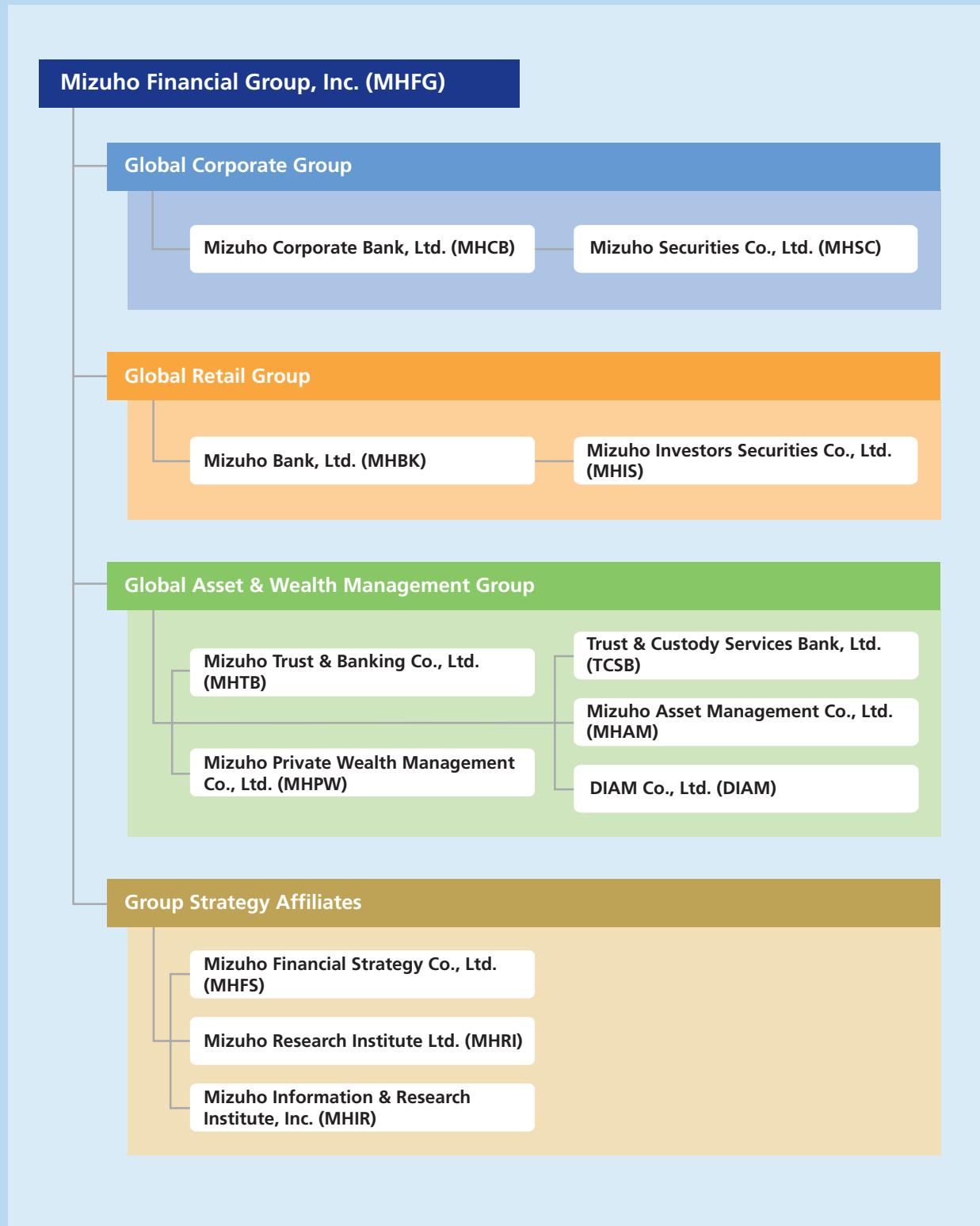


Management Structure

The three global groups organized based on customer needs are working to leverage their respective strengths as they work together to provide the highest-quality financial services.



We provide products, services and business solutions to meet the diversified financial needs of our customers by actively pursuing group synergies.

<p>Banking Business</p>	<p>Mizuho Corporate Bank (MHCB) MHCB focuses its business on corporate finance, primarily serving large corporations (such as those listed on the first sections of domestic stock exchanges), financial institutions and their group companies, public sector entities, and overseas corporations including subsidiaries of Japanese companies.</p>	<p>Mizuho Bank (MHBK) MHBK serves primarily individuals, SMEs, and middle-market corporations, and local governments in Japan.</p>	<p>Mizuho Trust & Banking (MHTB) A trust bank that possesses strengths in both the corporate and individual markets.</p>
<p>Securities Business</p>	<p>Mizuho Securities (MHSC) A securities company with a global wholesale business platform and a nationwide customer base.</p>	<p>Mizuho Investors Securities (MHIS) A securities company that is building a powerful cooperative network with MHBK.</p>	
<p>Trust and Asset Management Business</p>	<p>Mizuho Trust & Banking (MHTB) A trust bank that makes the most of its trust functions in offering solutions to Mizuho's customers.</p>	<p>Trust & Custody Services Bank (TCSB) A highly specialized trust bank focusing on the custody business.</p>	<p>Defined Contribution Plan Services (DCPS) An entity that specializes in managing defined contribution pension plans.</p>
	<p>Mizuho Asset Management (MHAM) An asset management company with a long history (established in 1964).</p>	<p>DIAM An asset management company in which The Dai-ichi Life Insurance and Mizuho both have equity holdings.</p>	
<p>Other Businesses</p>	<p>UC Card A credit card company specializing in operational management of the UC brand and acquiring business.</p>	<p>Mizuho Private Wealth Management (MHPW) A wealth management services company.</p>	<p>Mizuho Trust Realty Company A real estate agency.</p>
	<p>Mizuho Credit Guarantee Guarantees housing and other loans.</p>	<p>Mizuho Capital A principal venture capital company.</p>	<p>Mizuho Factors Engages in guaranteeing overseas and domestic trade receivables, and collection agency business within Japan.</p>
<p>Mizuho Research Institute (MHRI) A think tank.</p>	<p>Mizuho Information & Research Institute (MHIR) A company in charge of IT strategy.</p>	<p>Mizuho-DL Financial Technology A research and development company of financial technology.</p>	<p>Mizuho Financial Strategy (MHFS) An advisory company for financial institutions.</p>

Office Network

We utilize our office network, which covers every prefecture in Japan as well as major overseas cities, to respond to our customers' diversified and globalizing financial needs while supporting the smooth progress of economic activities.

International Network (As of August 3, 2010)

MHCB

- Overseas branch or relevant office
- Overseas representative office
- Major overseas subsidiary or relevant office

MHSC

- ▲ Overseas subsidiary
- ▲ Overseas representative office

MHTB

- Overseas subsidiary

DIAM

- ◆ Overseas subsidiary



*MHSC started operations of its overseas subsidiary Mizuho Saudi Arabia on November 2, 2009.

*MHSC opened its subsidiary Mizuho Securities India in Mumbai on August 3, 2010.

*Mizuho Corporate Bank (China) received approval to start preparations for the establishment of a branch in Suzhou, scheduled to be opened in fiscal 2010.

*Mizuho Corporate Bank received approval for a new commercial banking license in Malaysia and is preparing to establish a wholly-owned banking subsidiary, scheduled to be opened in 2011.

