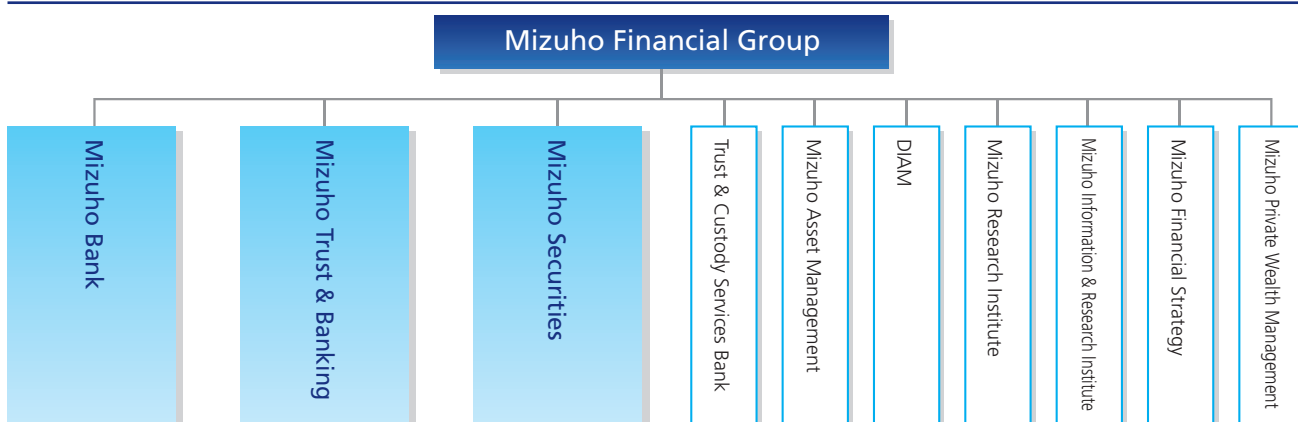


Mizuho's Group Structure



Profiles of Group Companies (As of September 30, 2013)

Mizuho Financial Group (MHFG)

Date of Establishment: January 8, 2003
Capital: ¥2,254,972 million
Issued Shares: 25,113,525,747 shares
 Common Stock: 24,198,773,747 shares
 Preferred Stock: 914,752,000 shares
Location of Head Office: 1-5-5, Otemachi, Chiyoda-ku, Tokyo 100-8176, Japan
 (Relocated on December 9, 2013)
 Tel. +81-(0)3-5224-1111
Representative: Yasuhiro Sato, President & CEO
 (concurrently assumes President & CEO of Mizuho Bank)
Number of Employees: 1,074

Mizuho Bank (MHBK)

Date of Establishment: July 1, 2013
Capital: ¥1,404,065 million
Location of Head Office: 1-3-3, Marunouchi, Chiyoda-ku, Tokyo 100-8210, Japan
 Tel. +81-(0)3-3214-1111
Representative: Yasuhiro Sato, President & CEO
Number of Employees: 26,839
Domestic Network Head Office and Branches: 420
 Sub-branches: 39
Overseas Network Branches or Relevant Offices: 34
 Representative Offices: 7

Mizuho Trust & Banking (MHTB)

Date of Establishment: March 12, 2003
Capital: ¥247,369 million
Location of Head Office: 1-2-1, Yaesu, Chuo-ku, Tokyo 103-8670, Japan
 Tel. +81-(0)3-3278-8111
Representative: Takeo Nakano, President & CEO
Number of Employees: 3,119
Domestic Network Head Office and Branches: 36
 Sub-branches: 16 (Trust Lounges: 15)
Overseas Network Subsidiaries: 2

Mizuho Securities (MHSC)

Date of Establishment: January 4, 2013
Capital: ¥125,167 million
Location of Head Office: Otemachi First Square, 1-5-1, Otemachi, Chiyoda-ku, Tokyo 100-0004, Japan
 Tel. +81-(0)3-5208-3210
Representative: Hiroshi Motoyama, President & CEO
Number of Employees: 7,198
Domestic Network Head Office and Departments: 3
 Branches and Sales Offices: 116
 Planet Booths: 168
 Financial Advisors Sales Department: 1
Overseas Network Subsidiaries: 8 Representative Offices: 2

Ratings (As of January 31, 2014)

	R&I		JCR		Moody's		Standard & Poor's		Fitch	
	Long Term	Short Term	Long Term	Short Term	Long Term	Short Term	Long Term	Short Term	Long Term	Short Term
Mizuho Financial Group	A	a-1	—	—	—	P-1	A	—	A-	F1
Mizuho Bank	A+	a-1	AA-	—	A1	P-1	A+	A-1	A-	F1
Mizuho Trust & Banking	A+	a-1	AA-	—	A1	P-1	A+	A-1	A-	F1
Mizuho Securities	A+	a-1	AA-	J-1+	A2*	P-1*	—	—	—	—

* Credit ratings for MTN programme (Joint Medium-Term Note Programme with Mizuho International and Mizuho Securities USA, based on keep well agreement with Mizuho Financial Group and Mizuho Bank).

Trust & Custody Services Bank (TCSB)

As Mizuho's trust bank specializing in asset administration, TCSB will continue to provide high-quality, high-value-added trust and custody services to customers including large institutional investors. As of March 31, 2013, the balance of assets under management was approximately ¥358 trillion, the largest scale in Japan.

Date of Establishment: January 22, 2001
Capital: ¥50,000 million
Location of Head Office: Tower Z, Harumi Triton Square, 1-8-12, Harumi, Chuo-ku, Tokyo
Representative: Akira Moriwaki, President & CEO
Number of Employees: 581

Mizuho Asset Management (MHAM)

MHAM's core businesses are investment trust business, mainly for individuals and financial institutions, and investment advisory business, principally for public and private pensions, financial institutions and corporations. MHAM's asset management products and services cover a wide range from equities and bonds to alternative investments.

Date of Establishment: July 1, 2007
Capital: ¥2,045 million
Location of Head Office: 3-5-27, Mita, Minato-ku, Tokyo
Representative: Shinichiro Tanaka, President
Number of Employees: 227

DIAM

DIAM is an asset management company in which The Dai-ichi Life Insurance and Mizuho both have equity holdings. DIAM collaborates with its offices in Europe, the United States and Asia to offer investment trust products to individuals and corporate customers, as well as provide investment advisory services to customers including Japanese and overseas pension funds.

Date of Establishment: October 1, 1999
Capital: ¥2,000 million
Location of Head Office: New Tokyo Building 5th Floor, 3-3-1, Marunouchi, Chiyoda-ku, Tokyo
Representative: Norio Nakajima, President & CEO
Number of Employees: 418
Overseas Network Subsidiaries: 4

Mizuho Research Institute (MHRI)

MHRI is a think tank with high-level research and solution-development divisions as well as its own corporate membership organization. MHRI's missions are working to contribute to the prosperity of its customers and the development of society through its research activities.

Date of Establishment: October 1, 2002
Capital: ¥900 million
Location of Head Office: 1-2-1, Uchisaiwaicho, Chiyoda-ku, Tokyo
Representative: Mitsuaki Tsuchiya, President & CEO
Number of Employees: 287

Mizuho Information & Research Institute (MHIR)

With IT as its core technology, MHIR is a professional organization with more than 4,000 employees that provides assistance to corporations in increasing their corporate value through its consulting, system integration and outsourcing services.

Date of Establishment: October 1, 2004
Capital: ¥1,627 million
Location of Head Office: 2-3 Kanda-Nishikicho, Chiyoda-ku, Tokyo
Representative: Junichi Nishizawa, President & CEO
Number of Employees: 4,298

Mizuho Financial Strategy (MHFS)

MHFS offers research and advisory services relating to matters such as establishment of holding companies, smooth implementation of group management and building group information security management systems.

Date of Establishment: September 29, 2000
Capital: ¥10 million
Location of Head Office: 2-5-1, Marunouchi, Chiyoda-ku, Tokyo
Representative: Hideyuki Takahashi, President
Number of Employees: 41

Mizuho Private Wealth Management (MHPW)

MHPW offers consulting services tailored to the needs of its customers. These services range from consulting on customers' financial matters such as wealth management, arranging for business inheritance to advice on customers' individual matters, including health of the customers themselves as well as family members and children's education.

Date of Establishment: October 3, 2005
Capital: ¥500 million
Location of Head Office: 1-1-5, Uchisaiwaicho, Chiyoda-ku, Tokyo
Representative: Nobutake Nishijima, President
Number of Employees: 24

Notes: 1. The representatives of each company have representation rights.

2. The numbers of employees do not include each company's employees dispatched outside each company while it includes employees dispatched from outside each company. This figure also includes overseas local staff but excludes executive officers and temporary employees.