

Business domain

The Mizuho group's business domains include banking, trust banking, securities, asset management, research and consulting, and other services.

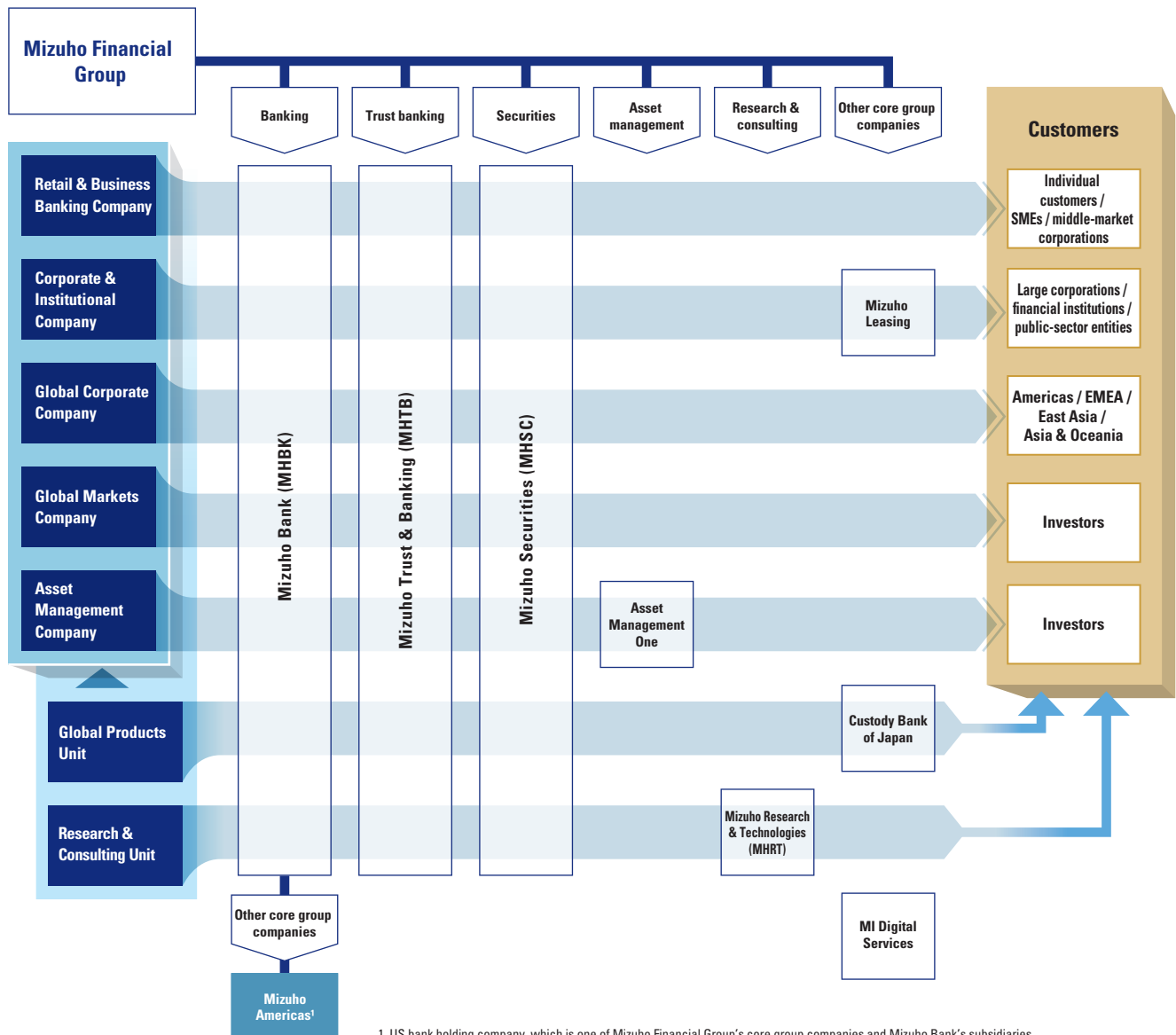
Our group-wide business is centrally managed under a holding company, and in order to leverage Mizuho's unique characteristics, in April 2016 we established five in-house companies covering each customer segment and two units with the aim of better providing services that meet customer needs in a timely manner.

In-house companies:

Determine and promote strategies group-wide according to the attributes of customers.

Units:

Mizuho has a Global Products Unit, which covers investment banking and transaction banking, and a Research & Consulting Unit, which consolidates insights into industry, business, the economy, and financial markets along with expertise in business strategy, sustainability, digital transformation, mathematics and data science, and other areas. Both units leverage their expertise to support all of the in-house companies.



1. US bank holding company, which is one of Mizuho Financial Group's core group companies and Mizuho Bank's subsidiaries

About the in-house companies

Retail & Business Banking Company

■ Stable revenue ■ Upside



FY2021 Net Business Profits



Expense ratio



ROE

Business overview

The Retail & Business Banking Company, as the in-house company in charge of the customer segments of individual customers, SMEs, and middle-market firms, engages in consulting services that integrate banking, trust banking, securities and other functions within the group, as well as provides the next generation of financial services incorporating both financial and non-financial products and services by leveraging advanced technologies through alliances with other companies. By working together with our customers, we aim to facilitate their continuous growth.

Corporate & Institutional Company

■ Stable revenue ■ Upside



FY2021 Net Business Profits



Expense ratio



ROE

Business overview

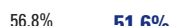
The Corporate & Institutional Company, as the in-house company in charge of the client segments of large corporations, financial institutions, and public-sector entities in Japan, provides custom-designed solutions for each client on a group-wide basis to meet clients' diverse needs for financial and non-financial products and services. In designing these solutions, we bring together the capabilities of Mizuho Bank, Mizuho Trust & Banking, Mizuho Securities, Mizuho Research & Technologies, Mizuho Leasing, and other companies across the group.

Global Corporate Company

■ Stable revenue ■ Upside



FY2021 Net Business Profits



Expense ratio



ROE

Business overview

The Global Corporate Company, as the in-house company in charge of the client segments of both Japanese companies operating outside Japan and non-Japanese companies, provides clients with advanced financial services by leveraging a deep understanding of our clients' businesses and our strengths in corporate finance and transaction banking, such as lending and corporate bond underwriting.

Global Markets Company

■ Stable revenue ■ Upside
■ Banking



FY2021 Net Business Profits



Expense ratio



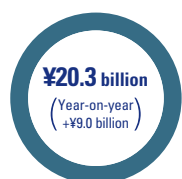
ROE

Business overview

The Global Markets Company engages in sales and trading services to offer market products to meet our clients' risk hedging and asset management needs and also conducts ALM and investment business, including capital raising and portfolio management. We will aim to maintain our status as one of Asia's major players in global markets through collaboration between the group's banking, trust banking, and securities functions.

Asset Management Company

■ Stable revenue ■ Upside



FY2021 Net Business Profits



Expense ratio



ROE

Business overview

The Asset Management Company, as the in-house company in charge of business related to asset management, provides products and services that match the asset management needs of our wide range of customers, from individuals to institutional investors, through the collaboration between the group's banking, trust banking and securities functions and Asset Management One.