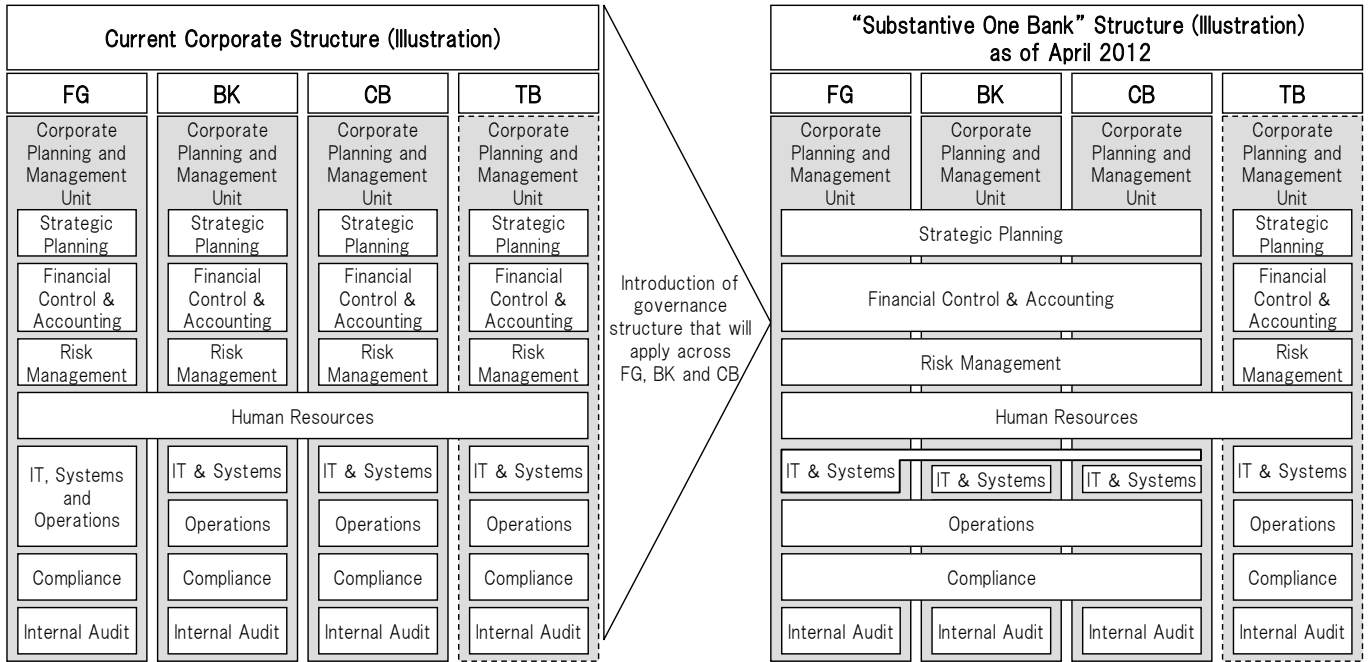


## Outline of Organization under “Substantive One Bank” Structure

### Outline of Organization of Corporate Planning and Management Unit



- ※ FG: Mizuho Financial Group, Inc., BK: Mizuho Bank, Ltd., CB: Mizuho Corporate Bank, Ltd., TB: Mizuho Trust & Banking Co., Ltd. (the same shall apply in the chart below.)
- ※ With respect to Internal Audit, the current structure will be maintained in order to ensure mutual checks among the entities in light of the unification of business operation.

### Outline of Organization of Relationship Management Units, Products Units and Markets Unit

