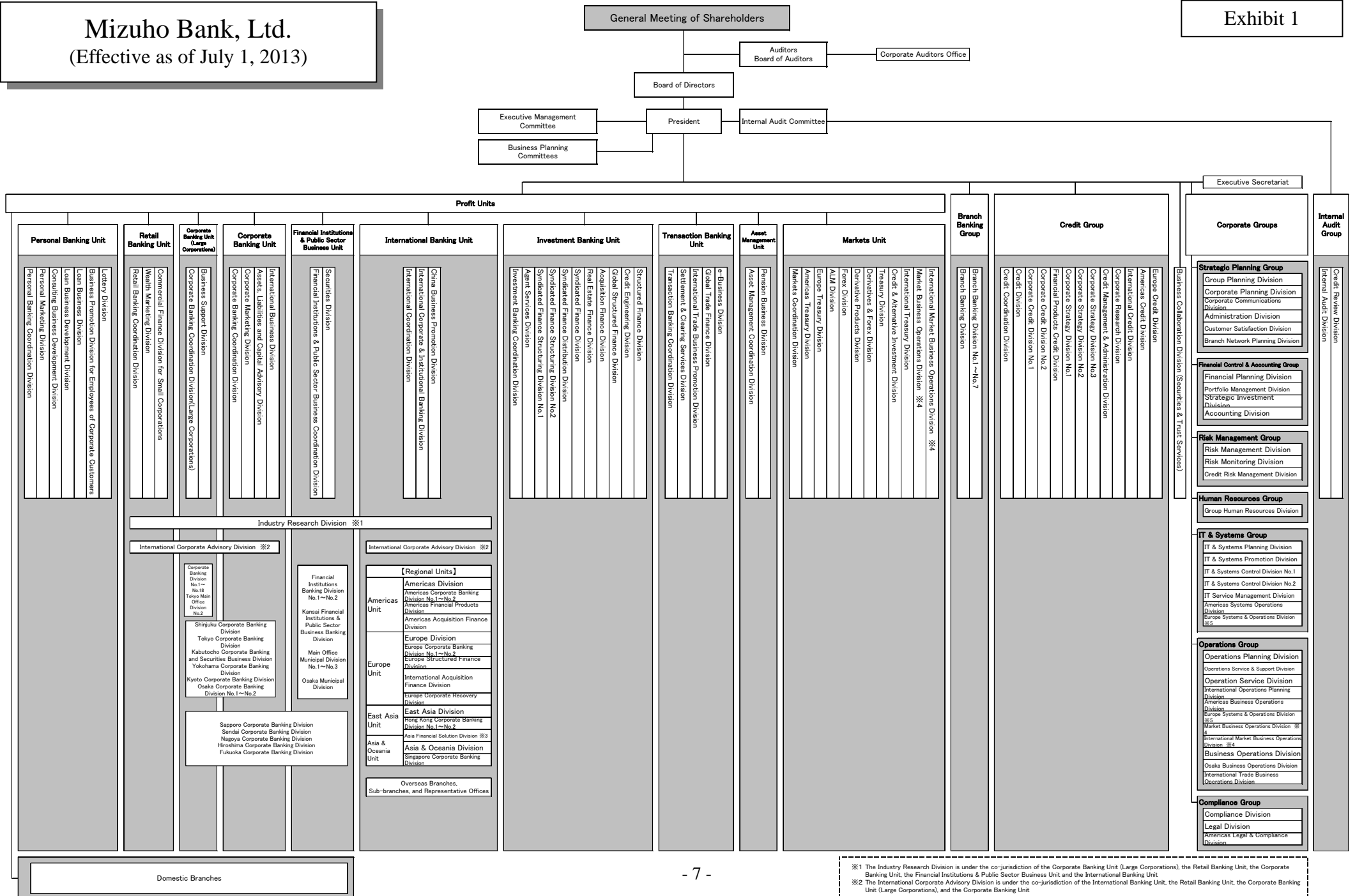


# Mizuho Bank, Ltd.

(Effective as of July 1, 2013)

Exhibit 1



※1 The Industry Research Division is under the co-jurisdiction of the Corporate Banking Unit (Large Corporations), the Retail Banking Unit, the Corporate Banking Unit, the Financial Institutions & Public Sector Business Unit and the International Banking Unit.  
 ※2 The International Corporate Advisory Division is under the co-jurisdiction of the International Banking Unit, the Retail Banking Unit, the Corporate Banking Unit (Large Corporations), and the Corporate Banking Unit.  
 ※3 The Asia Financial Solution Division is under the co-jurisdiction of the East Asia Unit, and the Asia & Oceania Unit.  
 ※4 The Market Business Operations Division and the International Market Business Operations Division are under the co-jurisdiction of the Markets Unit and the Operations Group.  
 ※5 The Europe Systems & Operations Division is under the co-jurisdiction of the IT & Systems Group and the Operations Group.