

October 22, 2012

To whom it may concern:

Mizuho Securities Co., Ltd.

Mizuho Investors Securities Co., Ltd.

Announcement of the Appointment of Executive Officers

Mizuho Securities Co., Ltd. and Mizuho Investors Securities Co., Ltd. hereby announce the following appointments of executive officers of the new company, which will be formed by the merger of the two companies on January 4th, 2013.

1. The appointment of executive officers of the new company

(Effective as of January 4, 2013 (The effective date of the Merger))

Title	Name	Responsibilities
President (Representative Director)	Mr. Hiroshi Motoyama	
Deputy President (Representative Director)	Mr. Katsuyoshi Ejima	
Deputy President	Mr. Hideo Abe	Head of Investment Banking Division
	Mr. Hidetake Nakamura	Head of Internal Audit Division
	Mr. Hajime Saito	Head of Corporate Investment Services & Retail Business Division, <u>Head of Wealth Management Group</u>
	Mr. Kenichi Minamitani	Head of Compliance Group
Managing Director and Managing Executive Officer	Mr. Hideo Gamou	Head of Product Planning & Promotion Group
	Mr. Shuzo Fujii	Head of IB Business Promotion Group, in charge of Business Collaboration Dept. (Banking & Trust Services)
	Mr. Yasuo Agemura	<u>Head of Global Markets,</u> Head of Markets & Products Division , Head of Research Group
Director	Mr. Keizo Ohashi	Chairman of Mizuho Securities UK Holdings Ltd., Chairman of Mizuho International plc, Chairman of Mizuho Securities USA Inc.
Corporate Auditor (full-time)	Mr. Yasushi Higo	
	Mr. Yoshihisa Eguchi	
	Mr. Hideo Etani	
Corporate Auditor	Mr. Yoshinobu Shigeji	
Managing Executive Officer	<u>Mr. Akira Hattori</u>	<u>Joint Head of IT & Systems Group</u>
	<u>Mr. Katsumi Nakada</u>	<u>Joint Head of Product Planning & Promotion Group</u>

Title	Name	Responsibilities
Managing Executive Officer	<u>Mr. Shingo Ishizaki</u>	<u>Attached to Investment Banking Group and Corporate Investment Services & Retail Business Division</u>
	<u>Mr. Takaaki Kato</u>	<u>Attached to Investment Banking Group, in charge of Asia & China Business Promotion Dept., Chairman of Mizuho Securities Asia Limited</u>
	<u>Mr. Koichi Kubo</u>	<u>Attached to Investment Banking Group</u>
	<u>Mr. Shigeru Akiyoshi</u>	<u>Joint Head of Corporate Investment Services & Retail Business Division, Head of Retail Business Group</u>
	<u>Mr. Masahiro Miyamoto</u>	<u>Co-Head of Investment Banking Group, Attached to Corporate Investment Services & Retail Business Division</u>
	<u>Mr. Kenjiro Inada</u>	<u>Joint Head of Corporate Investment Services & Retail Business Division, Head of Banking & Trust Collaboration Group</u>
	<u>Mr. Masaya Usuha</u>	<u>Head of Global Operations, Head of Operations Group, in charge of Corporate Support Dept.</u>
	<u>Mr. Shigeaki Katayama</u>	<u>Head of Global IT, Head of IT & Systems Group</u>
	<u>Mr. Shuichi Shimada</u>	<u>Co-Head of Investment Banking Group, Head of Public & Financial Institutions Group, in charge of Investment Banking Business Administration Dept.</u>
	<u>Mr. Yoshio Shimizu</u>	<u>Head of Global Investment Banking, Head of IB Products Group, Attached to IB Business Promotion Group</u>
	<u>Mr. Yukihiro Take</u>	<u>Attached to Corporate Investment Services & Retail Business Division, Branch Manager of Osaka Branch</u>
	<u>Mr. Katsunori Nozawa</u>	<u>Attached to Investment Banking Group</u>
	<u>Mr. Hiroto Koda</u>	<u>Head of Strategic Planning Group</u>
	<u>Mr. Atsuo Kumagai</u>	<u>Joint Head of Compliance Group</u>
	<u>Mr. Hidefumi Kobayashi</u>	<u>Joint Head of Research Group, in charge of Due Diligence Dept., Beijing Representative Office, Shanghai Representative Office and Investment Dept.</u>
	<u>Mr. Kazumi Takemoto</u>	<u>Attached to Corporate Investment Services & Retail Business Division</u>
	<u>Mr. Tatsuya Yamada</u>	<u>Head of Global Finance, Head of Financial Control & Accounting Group</u>
	<u>Mr. Sadanobu Takada</u>	<u>Attached to IB Business Promotion Group</u>
<u>Mr. Shinichi Saito</u>	<u>Attached to Corporate Investment Services & Retail Business Division and Banking & Trust Collaboration Group</u>	

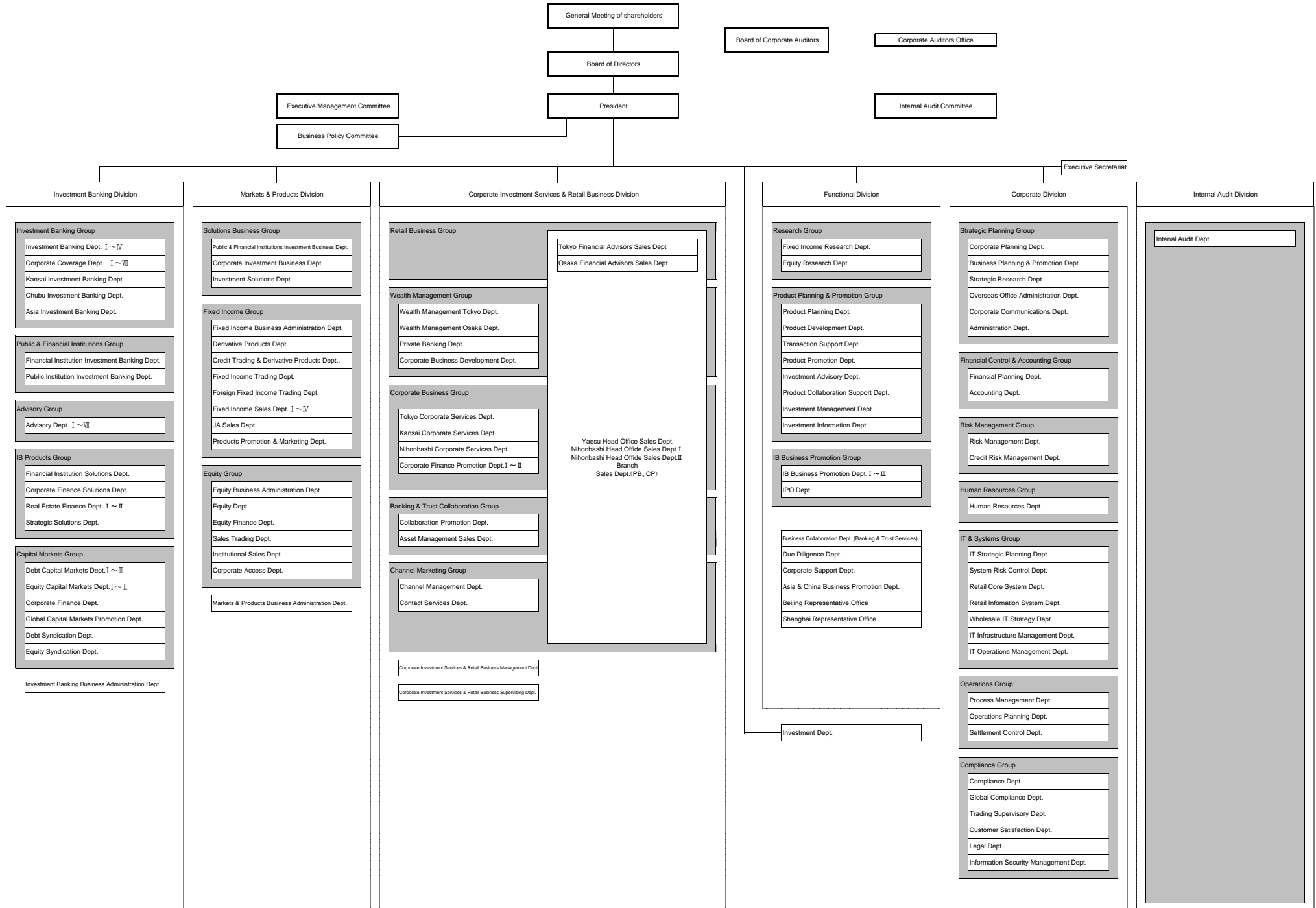
Title	Name	Responsibilities
Managing Executive Officer	<u>Mr. Koichi Ninomine</u>	<u>Attached to Corporate Investment Services & Retail Business Division</u>
	<u>Mr. Tetsuhiro Sakamoto</u>	<u>Joint Head of Internal Audit Division</u>
Executive Officer	<u>Mr. Junichi Yamada</u>	<u>In charge of Solutions Business Group and Fixed Income Group</u>
	Mr. Kenji Fujii	<u>Head of Global Risk Management, Head of Risk Management Group</u>
	<u>Mr. Sadamu Yoshida</u>	<u>Attached to Investment Banking Group</u>
	<u>Mr. Koji Kamino</u>	<u>Attached to Corporate Investment Services & Retail Business Division, Branch Manager of Fukuoka-Chuo Branch</u>
	Mr. Naomi Tsumura	<u>Head of Human Resources Group, in charge of Executive Secretariat</u>
	<u>Mr. Shinya Hanamura</u>	<u>Head of Advisory Group</u>
	<u>Mr. Taiji Kumagai</u>	<u>Head of Channel Marketing Group</u>
	<u>Mr. Shuji Ueno</u>	<u>Branch Manager of Kyoto Branch</u>
	<u>Mr. Kazuya Yamasato</u>	<u>Head of Corporate Business Group</u>
	<u>Mr. Yasuto Hamanishi</u>	<u>Head of Capital Markets Group</u>
	<u>Mr. Daigo Kawaguchi</u>	<u>Branch Manager of Nagoya Branch</u>
	<u>Mr. Yoshihiro Kishishita</u>	<u>Attached to Corporate Investment Services & Retail Business Division</u>
	<u>Mr. Yasuhiro Kuwahara</u>	<u>Attached to Corporate Investment Services & Retail Business Division</u>
	<u>Mr. Hiroshi Shibata</u>	<u>Joint Head of Channel Marketing Group</u>
	<u>Mr. Takashi Saida</u>	<u>Branch Manager of Yokohama Branch</u>
	<u>Mr. Tomoshi Saeki</u>	<u>Branch Manager of Osaka-Nishi Branch</u>
	<u>Mr. Noriyuki Nogami</u>	<u>General Manager of Nihonbashi Head Office Sales Dept.</u>
	<u>Mr. Hiroki Takeshi</u>	<u>Joint Head of Retail Business Group</u>
	<u>Mr. Kazumichi Komatsu</u>	<u>Branch Manager of Shibuya Branch</u>
	<u>Mr. Yoshikiyo Yamazaki</u>	<u>Attached to IT & Systems Group</u>
<u>Mr. Satoshi Sugiyama</u>	<u>Joint Head of Operations Group</u>	
<u>Mr. Sei Toyokawa</u>	<u>Joint Head of Human Resources Group</u>	
<u>Mr. Taizo Tomita</u>	<u>Joint Head of Banking & Trust Collaboration Group, Head of Collaboration Promotion Dept.</u>	

- indicates “outside corporate auditor” under the Company Law of Japan
- Underlined are the appointments made at this time. Those not underlined are the appointments already announced on September 19th, 2012.
- Names of department in English are provisional

End

Mizuho Securities Co.,Ltd. (Organizational Chart)

(Appendix 1)



※Names of department in English are provisional

Mizuho Securities Co.,Ltd. (Branch List)

(Appendix 2)

NO	Branch name under the New Company	Current Branch Name		NO	Branch name under the New Company	Current Branch Name		NO	Branch name under the New Company	Current Branch Name	
		Company	Branch			Company	Branch			Company	Branch
1	Yaesu Head Office Sales Dept.	SC	Head Office Sales Dept.	49	Jiyugaoka Sales Dept.	SC	Jiyugaoka Sales Dept.	97	Osaka Branch	SC	Osaka Branch
2	Nihonbashi Head Office Sales Dept. I	IS	Head Office Sales Dept. I	50	Omori Branch	IS	Omori Branch	98	Nanba Branch	IS	Nanba Branch
3	Nihonbashi Head Office Sales Dept. II	IS	Head Office Sales Dept. II	51	Omori Sales Dept.	SC	Omori Sales Dept.	99	Sakai Branch	SC	Sakai Branch
4	Tokyo Financial Advisors Sales Dept	SC	Tokyo Financial Advisors Sales Dept	52	Seiyo Branch	IS	Seiyo Branch	100	Ikeda Branch	SC	Ikeda Branch
5	Osaka Financial Advisors Sales Dept	SC	Osaka Financial Advisors Sales Dept	53	Shibuya-Higashiguchi Branch	SC	Shibuya Branch	101	Hirakata Branch	SC	Hirakata Branch
6	Sapporo Branch	IS	Sapporo Branch	54	Shibuya Branch	IS	Shibuya Branch	102	Higashiosaka Branch	SC	Higashiosaka Branch
7	Sapporo-Chuo Branch	SC	Sapporo Branch	55	Ikebukuro-Nishiguchi Branch	IS	Ikebukuro Branch	103	Kobe Branch	IS	Kobe Branch
8	Morioka Branch	IS	Morioka Branch	56	Ikebukuro Branch	SC	Ikebukuro Branch	104	Kobe-Motomachi Branch	SC	Kobe Branch
9	Sendai-Chuo Branch	SC	Sendai Branch	57	Shakujii Branch	IS	Shakujii Branch	105	Himeji Branch	SC	Himeji Branch
10	Sendai Branch	IS	Sendai Branch	58	Hachioji Branch	SC	Hachioji Branch	106	Himeji -Chuo Branch	IS	Himeji Branch
11	Akita Branch	SC	Akita Branch	59	Tachikawa Branch	IS	Tachikawa Branch	107	Amagasaki Branch	IS	Amagasaki Branch
12	Fukushima Branch	IS	Fukushima Branch	60	Tachikawa Sales Dept.	SC	Tachikawa Sales Dept.	108	Akashi Branch	SC	Akashi Branch
13	Koriyama Branch	SC	Koriyama Branch	61	Kichijoji Branch	SC	Kichijoji Branch	109	Nishinomiya Branch	SC	Nishinomiya Branch
14	Mito Branch	SC	Mito Branch	62	Mitaka Branch	IS	Mitaka Branch	110	Sumoto Branch	SC	Sumoto Branch
15	Mito-Chuo Branch	IS	Mito Branch	63	Machida Branch	SC	Machida Branch	111	Nishiwaki Banch	SC	Nishiwaki Banch
16	Tsuchiura Branch	SC	Tsuchiura Branch	64	Niigata-Chuo Branch	IS	Niigata Branch	112	Nara Banch	SC	Nara Banch
17	Utsunomiya-Chuo Branch	SC	Utsunomiya Branch	65	Niigata Branch	SC	Niigata Branch	113	Takada Branch	SC	Takada Branch
18	Utsunomiya Branch	IS	Utsunomiya Branch	66	Toyama Branch	IS	Toyama Branch	114	Wakayama Branch	SC	Wakayama Branch
19	Takasaki-Chuo Branch	IS	Takasaki Branch	67	Toyama-Chuo Branch	SC	Toyama Branch	115	Tanabe Branch	SC	Tanabe Branch
20	Takasaki Branch	SC	Takasaki Branch	68	Kanazawa Branch	SC	Kanazawa Branch	116	Matsue Branch	SC	Matsue Branch
21	Kiryu Branch	IS	Kiryu Branch	69	Kanazawa-Chuo Branch	IS	Kanazawa Branch	117	Okayama Branch	SC	Okayama Branch
22	Omiya Branch	IS	Omiya Branch	70	Fukui Branch	SC	Fukui Branch	118	Okayama-Chuo Branch	IS	Okayama Branch
23	Omiya Sales Dept.	SC	Omiya Sales Dept.	71	Takefu Branch	SC	Takefu Branch	119	Hiroshima-Chuo Branch	SC	Hiroshima Branch
24	Urawa Branch	SC	Urawa Branch	72	Kofu Branch	IS	Kofu Branch	120	Hiroshima Branch	IS	Hiroshima Branch
25	Urawa-Chuo Branch	IS	Urawa Branch	73	Kofu-Chuo Branch	SC	Kofu Branch	121	Fukuyama Branch	SC	Fukuyama Branch
26	Tokorozawa Branch	IS	Tokorozawa Branch	74	Nagano Branch	SC	Nagano Branch	122	Ube Branch	SC	Ube Branch
27	Chiba Branch	SC	Chiba Branch	75	Gifu Branch	SC	Gifu Branch	123	Yanai Branch	SC	Yanai Branch
28	Chiba-Chuo Branch	IS	Chiba Branch	76	Gifu-Chuo Branch	IS	Gifu Branch	124	Tokushima Branch	SC	Tokushima Branch
29	Kashiwa Branch	IS	Kashiwa Branch	77	Shizuoka Banch	SC	Shizuoka Banch	125	Tokushima-Chuo Branch	IS	Tokushima Branch
30	Kashiwa-Nishiguchi Branch	SC	Kashiwa Branch	78	Shimizu Branch	IS	Shimizu Branch	126	Takamatsu Branch	SC	Takamatsu Branch
31	Yokohama-Nishiguchi Branch	SC	Yokohama Branch	79	Hamamatsu-Chuo Branch	SC	Hamamatsu Branch	127	Takamatsu-Chuo Branch	IS	Takamatsu Branch
32	Yokohama Branch	IS	Yokohama Branch	80	Hamamatsu Branch	IS	Hamamatsu Branch	128	Matsuyama Branch	SC	Matsuyama Branch
33	Kamiooka Branch	SC	Kamiooka Branch	81	Numazu Branch	SC	Numazu Branch	129	Imabari Branch	IS	Imabari Branch
34	Tama-plaza Sales Dept.	SC	Tama-plaza Sales Dept.	82	Fuji Branch	IS	Fuji Branch	130	Imabari-Chuo Branch	SC	Imabari Branch
35	Kawasaki Branch	IS	Kawasaki Branch	83	Nagoya-Ekimae Branch	IS	Nagoya Branch	131	Kitakyushu Branch	SC	Kitakyushu Branch
36	Muza Kawasaki Sales Dept.	SC	Muza Kawasaki Sales Dept.	84	Nagoya Branch	SC	Nagoya Branch	132	Fukuoka Branch	IS	Fukuoka Branch
37	Shinyurigaoka Branch	IS	Shinyurigaoka Branch	85	Toyohashi Branch	IS	Toyohashi Branch	133	Fukuoka-Chuo Branch	SC	Fyukuoka Branch
38	Hiratsuka Branch	SC	Hiratsuka Branch	86	Toyohashi-Chuo Branch	SC	Toyohashi Branch	134	Omuta Branch	SC	Omuta Branch
39	Odawara Branch	SC	Odawara Branch	87	Yokkaichi Branch	SC	Yokkaichi Branch	135	Saga Branch	IS	Saga Branch
40	Odawara-Chuo Branch	IS	Odawara Branch	88	Igauenno Branch	SC	Igauenno Branch	136	Saga-Chuo Branch	SC	Saga Banch
41	Zushi Branch	IS	Zushi Branch	89	Otsu Branch	SC	Otsu Branch	137	Nagasaki Branch	SC	Nagasaki Branch
42	Toranomon Branch	SC	Toranomon Branch	90	Kyoto Branch	SC	Kyoto Branch	138	Sasebo Branch	SC	Sasebo Branch
43	Shinjuku Branch	SC	Shinjuku Branch	91	Kyoto-Karasuma Branch	IS	Kyoto Branch	139	Kumamoto Branch	SC	Kumamoto Branch
44	Nishi-Shinjuku Branch	IS	Shinjuku Branch	92	Fukuchiyama Branch	SC	Fukuchiyama Branch	140	Kumamoto-Chuo Branch	IS	Kumamoto Branch
45	Ueno Branch	IS	Ueno Branch	93	Juso Branch	IS	Juso Branch	141	Kagoshima Branch	IS	Kagoshima Branch
46	Ueno-Hirokouji Branch	SC	Ueno Branch	94	Osaka-Nishi Branch	IS	Osaka Branch	142	Kagoshima-Chuo Branch	SC	Kagoshima Branch
47	Oshiage Branch	IS	Oshiage Branch	95	Umeda Branch	SC	Umeda Branch				
48	Jiyugaoka Branch	IS	Jiyugaoka Branch	96	Abeno Branch	SC	Abeno Branch				

※SC : Mizuho Securities Co., Ltd.、 IS : Mizuho Investors Securities Co., Ltd.

※Highlighted are the Branches whose names are changed.